

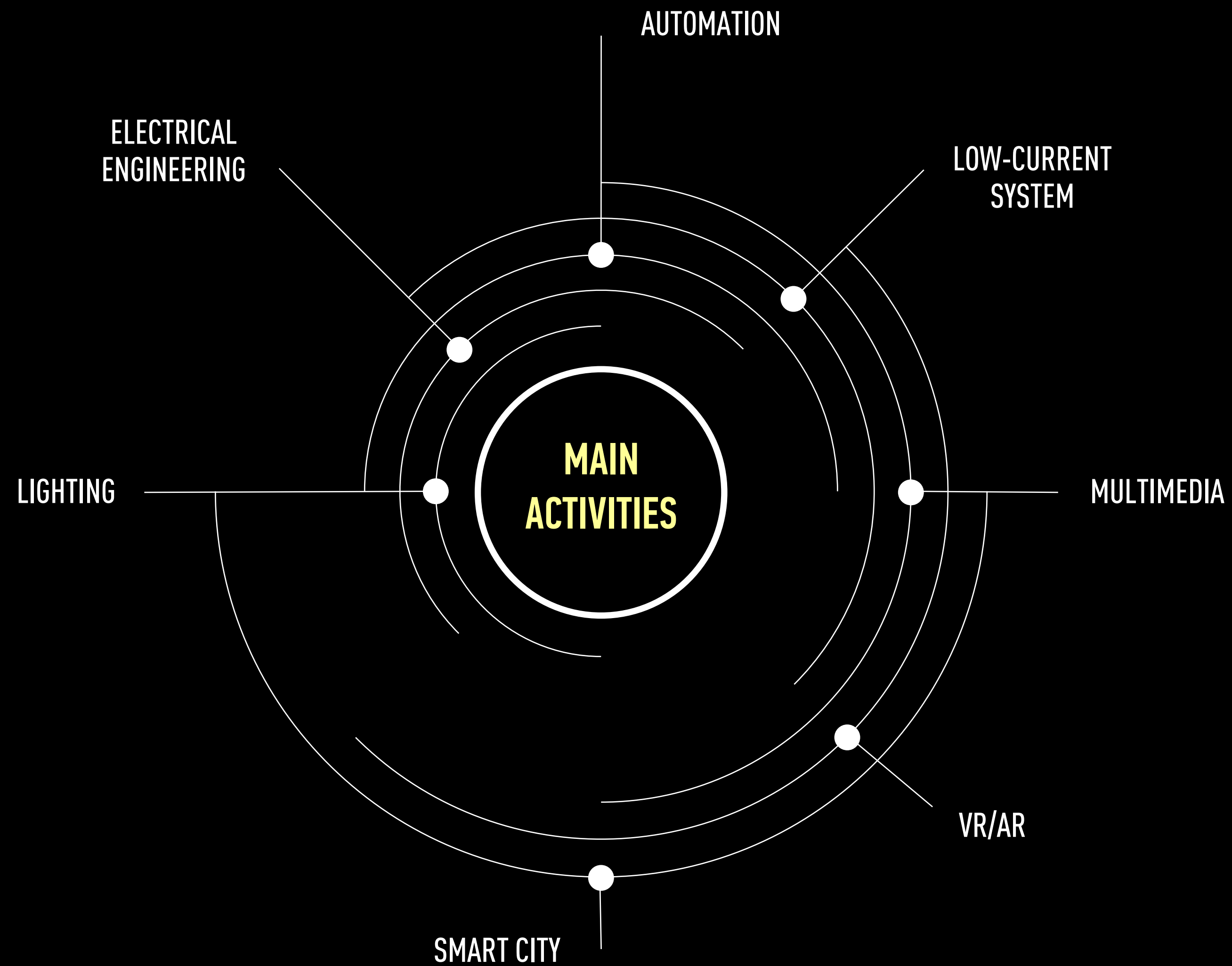


QPRO. CREATIVE ENGINEERING

PROFESSIONAL PARTNER IMPLEMENTING SOLUTIONS IN THE FIELD OF LIGHTING AND AUTOMATION SYSTEMS

We speak equally good the language of architecture and the language of engineering. We consider all the details and features while creating high-quality, comfortable and aesthetically harmonious spaces for a person

QPRO. CREATIVE ENGINEERING



Creative skills

Technical attainments

QPRO. CREATIVE ENGINEERING COMPANY SERVICES

CONCEPT
CREATION

DOCUMENTATION
DEVELOPMENT

EQUIPMENT
MANUFACTURING

SUPERVISION
INSTALLATION

SYSTEM
PROGRAMMING

CONSULTING,
SERVICE

LIGHTING - MULTIMEDIA - AUTOMATION

QPRO. CREATIVE ENGINEERING

2012

company year of foundation

100+

completed projects

PROJECT TYPES: BUILDINGS AND STRUCTURES, PARK TERRITORIES, EXPOSITION AREAS, PUBLIC SPACES, OFFICES, HOSPITALITY, RETAIL, URBAN APARTMENTS AND COUNTRY RESIDENCES.

**GEOGRAPHY
OF PROJECTS:**

RUSSIA

GREAT BRITAIN

UAE

CHINA

ARCHITECTURE AND LANDSCAPE



BUSINESS CENTER ZEMELNY MOSCOW, 2021

The architectural image of the building is created by the openwork, mesh shell of the facades, used in the progressive architecture of the 21st century and referring to such an example of Soviet constructivism as the tower of engineer Shukhov. This openwork structure had to be enhanced with the help of light. This task was solved by using LED spotlights with narrow optics, placed at the crosshairs of a metal structure. The rays of light that outline the envelope are directed from top to bottom and from bottom to top. Narrow optics avoid side flare by emphasizing every section of the structure. Narrow optics and aiming lights help minimize the effect of light pollution, while architectural lighting does not interfere with pedestrians and people in the building.

Thanks to the lighting, the building at night is a single ensemble from the basement to the highest point.





HOTEL AND RESIDENCE FAIRMONT TVERSKAYA MOSCOW, 2023

A premium-class residential complex implies not only the visual beauty of the architectural solution, but also comfort at any time of the day. Therefore, when developing a lighting solution, it was important to completely prevent any light from entering the windows from the lamps.

Relief, materials and color scheme of the facades were taken into account while choosing lighting fixtures. It was also necessary to take into account the peculiarity of the location and the oversaturation of the light of the environment, so a series of mock-ups was carried out to select suitable lighting fixtures. To illuminate the stylobate, the optimal power of the luminaires was chosen, taking into account the presence of a high level of illumination in this zone.

With the help of a well-thought-out lighting solution, it was possible to bring out the special details of the facade, as well as to convey the character of the building and its high status.





BC CLASS A+ AFI2B MOSCOW, 2022

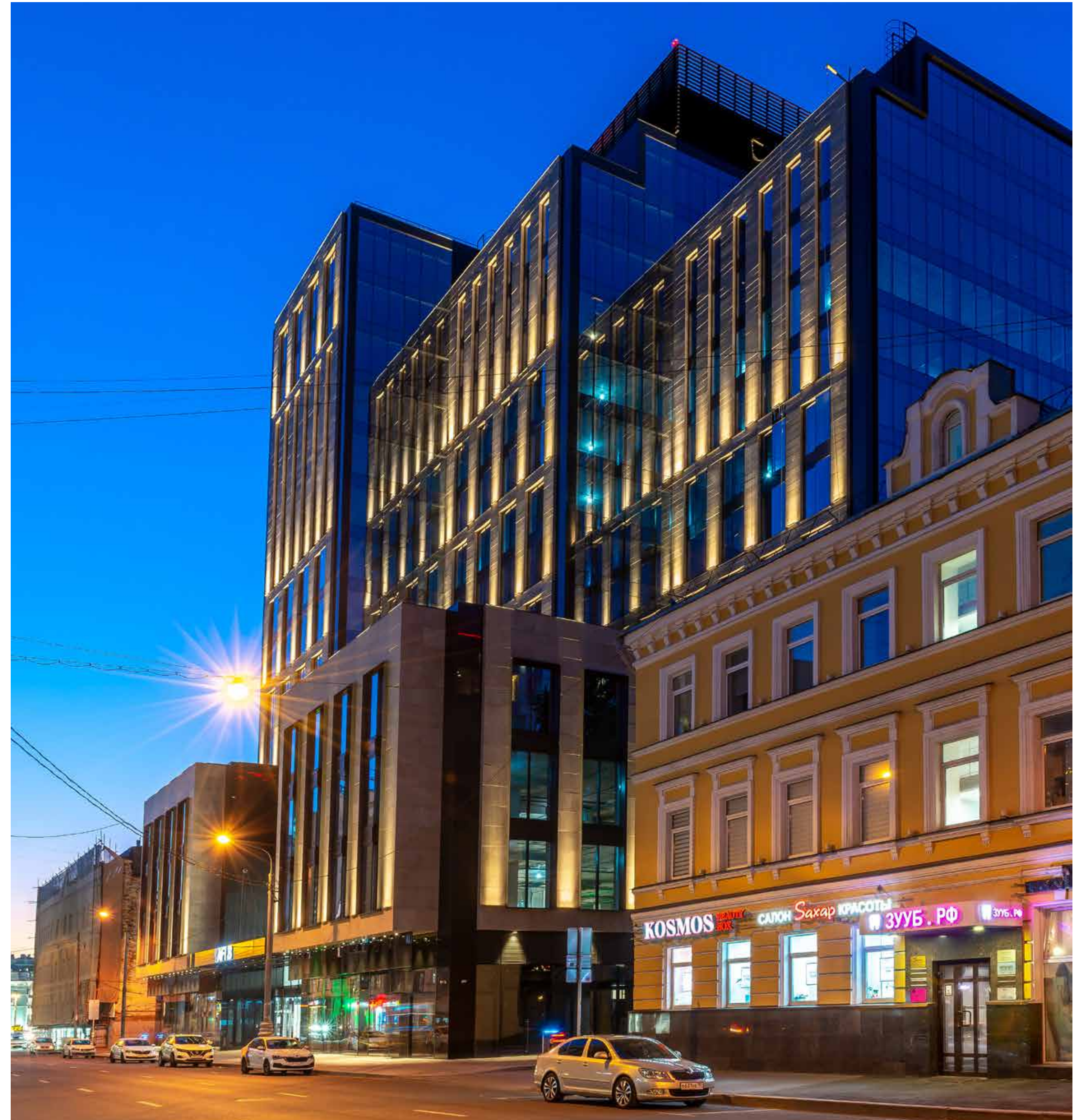
The lighting solution was developed considering the surrounding urban development and harmoniously blends into the existing lighting environment. Facades are combined of translucent structures and natural stone finishes.

The concept of architectural lighting design takes into account the peculiarities of facade solutions and emphasizes the 3-dimensional composition of the building.

Light fixtures are placed on the facades lined with stone, maintaining the architectural rhythm of the windows. Glass facades remain untouched helping to exclude parasitic illumination of the interiors, allowing people to admire the city at night from the inside.

The project provides functional lighting of the area around the business center (pedestrian areas), entrance groups, as well as places of entry to the underground parking.



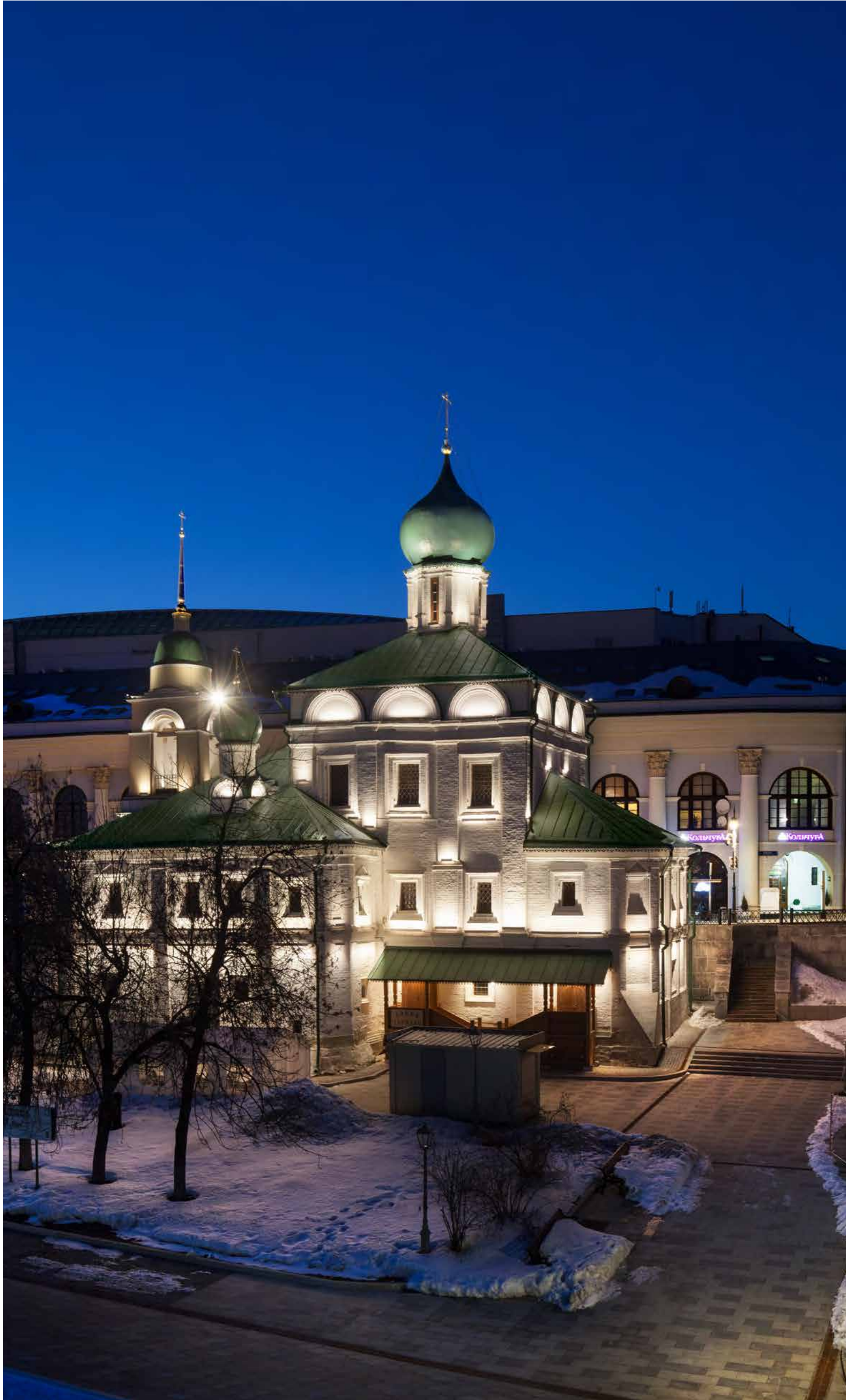


PATRIARCHAL COMPOUND MOSCOW, 2017

Architectural complex is located in the center of the city, and has many viewpoints both from the side of Zaryadye Park and the embankment, and from the side of Varvarka street. The accents on the facades' plastic create a harmonious combination of light and shadow. The lighting solution preserves a single composition of the ensemble, emphasizing the architectural features of each church.

Lighting of objects of historical heritage imposes serious restrictions on choosing and installation of lighting equipment. All lamps are equipped with special protective accessories in order not to create discomfort for passers-by. Also for this project there was a special system developed to minimize the number of attachment points to the facade.





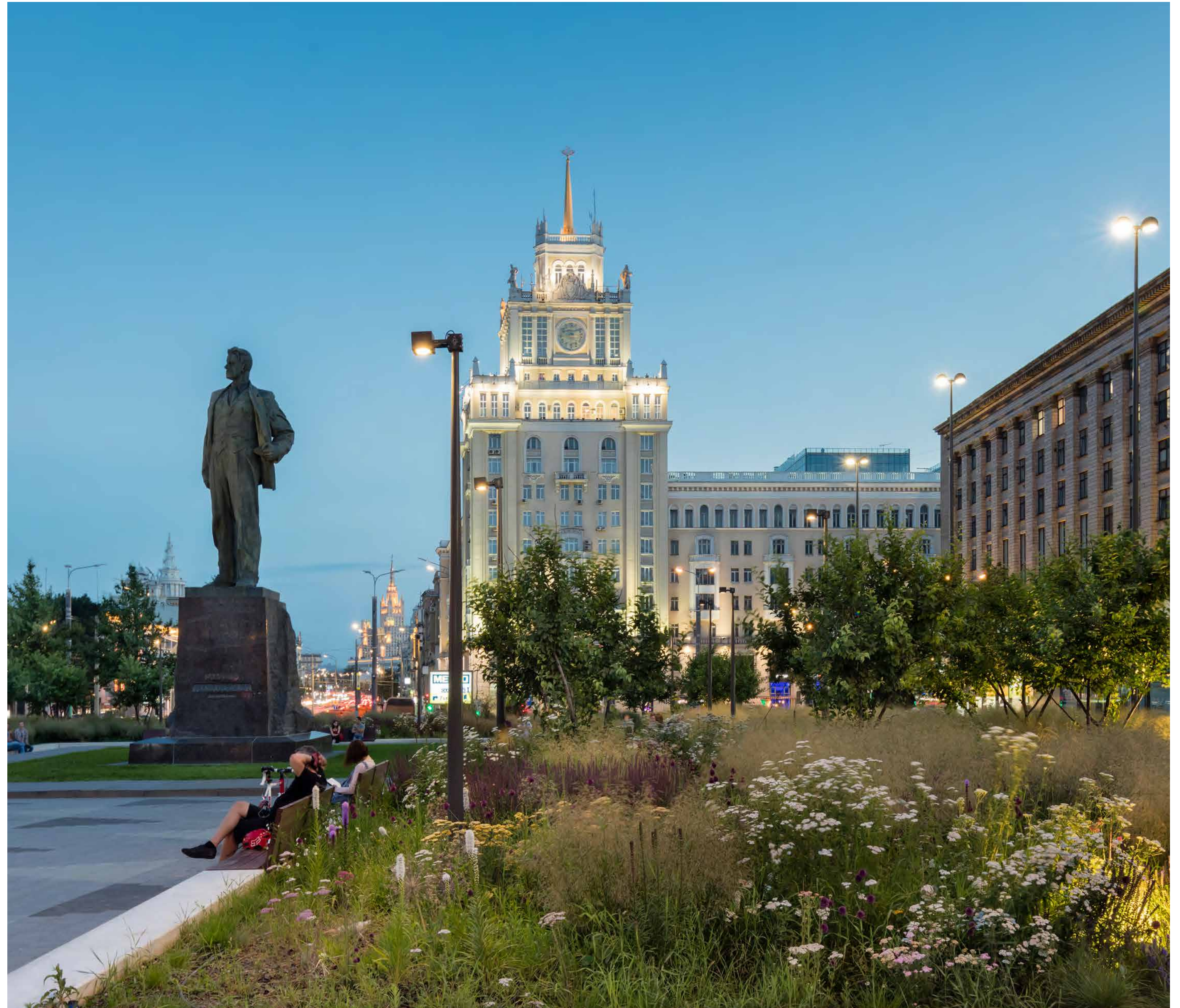
TRIUMPHAL SQUARE MOSCOW, 2015

This project is a public space in Moscow which largely set the standard for the comfort of the urban environment. planning, landscape and lighting solutions.

While creating a lighting concept for a comfortable stay in the evening, it was important to fill the space with general light, ensure a uniform fill, create the necessary level of illumination without overloading the territory, emphasize the "dynamism" and texture of the space.

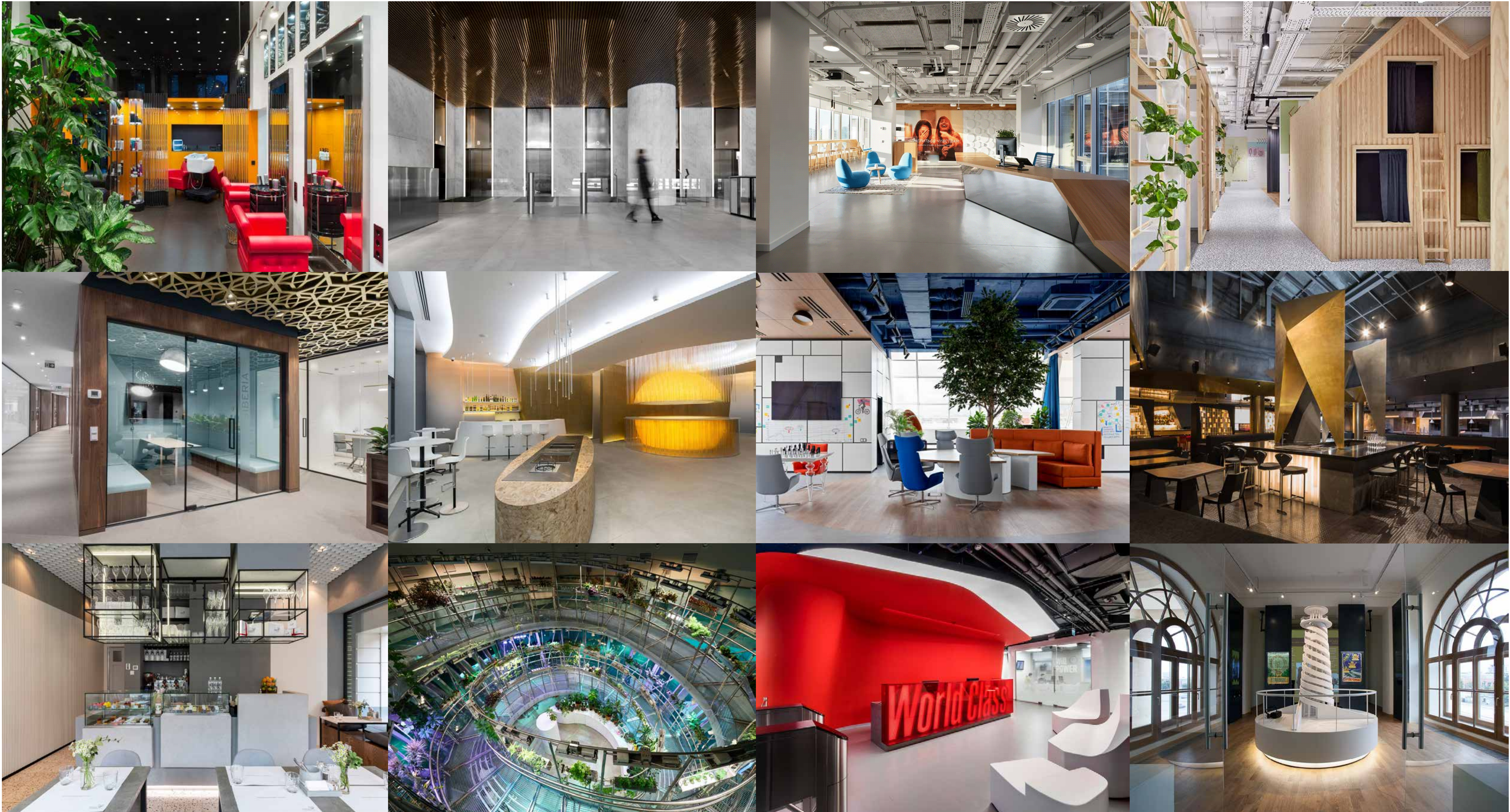
The main lighting of the square is practically invisible, since the luminaries are located on thin poles of 12 m high along the perimeter.

Decorative luminaries installed directly in the ground illuminate trees in flowerbeds.





PUBLIC AND COMMERCIAL INTERIORS



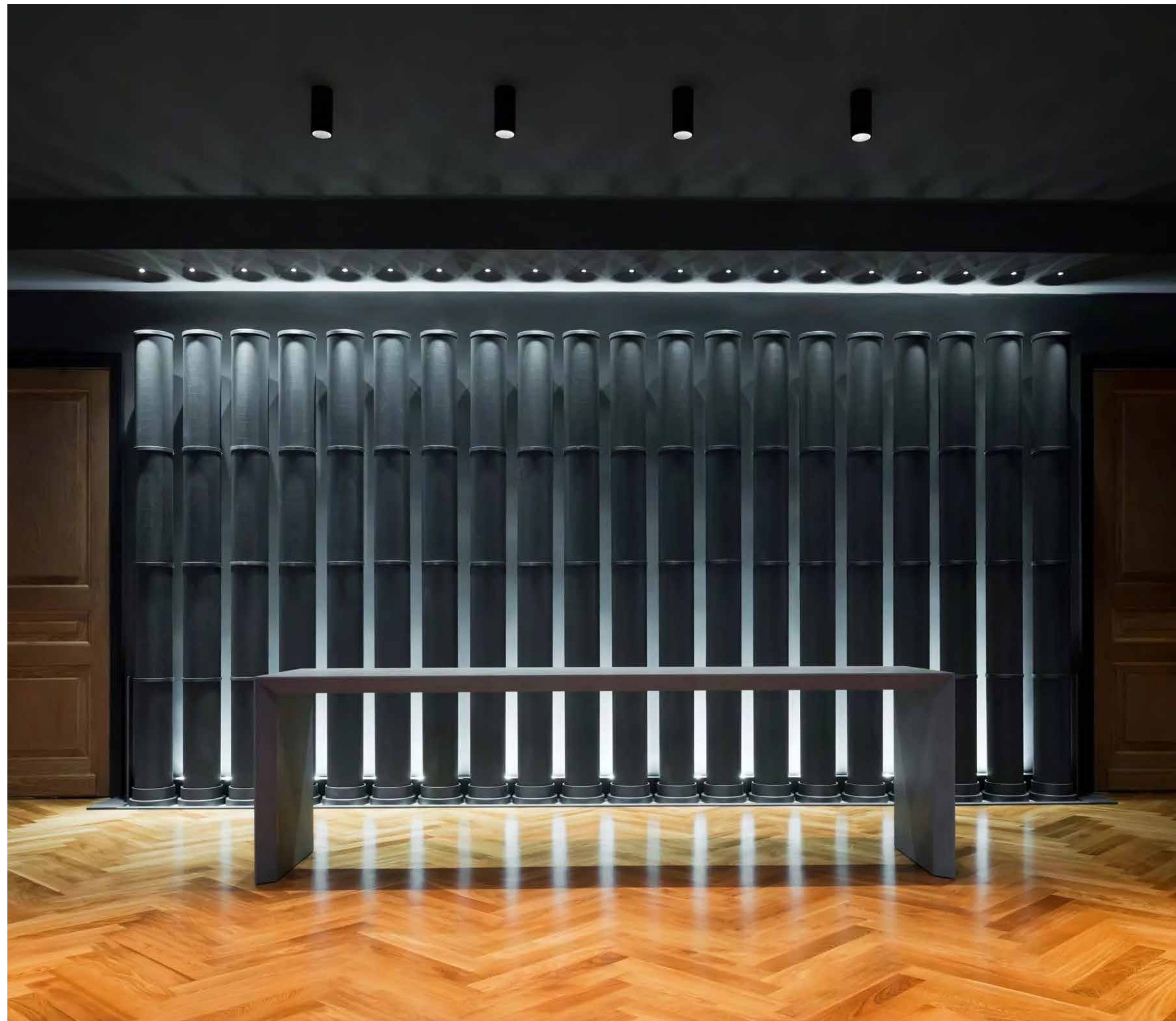
ELECTROTHEATER STANISLAVSKY MOSCOW, 2014

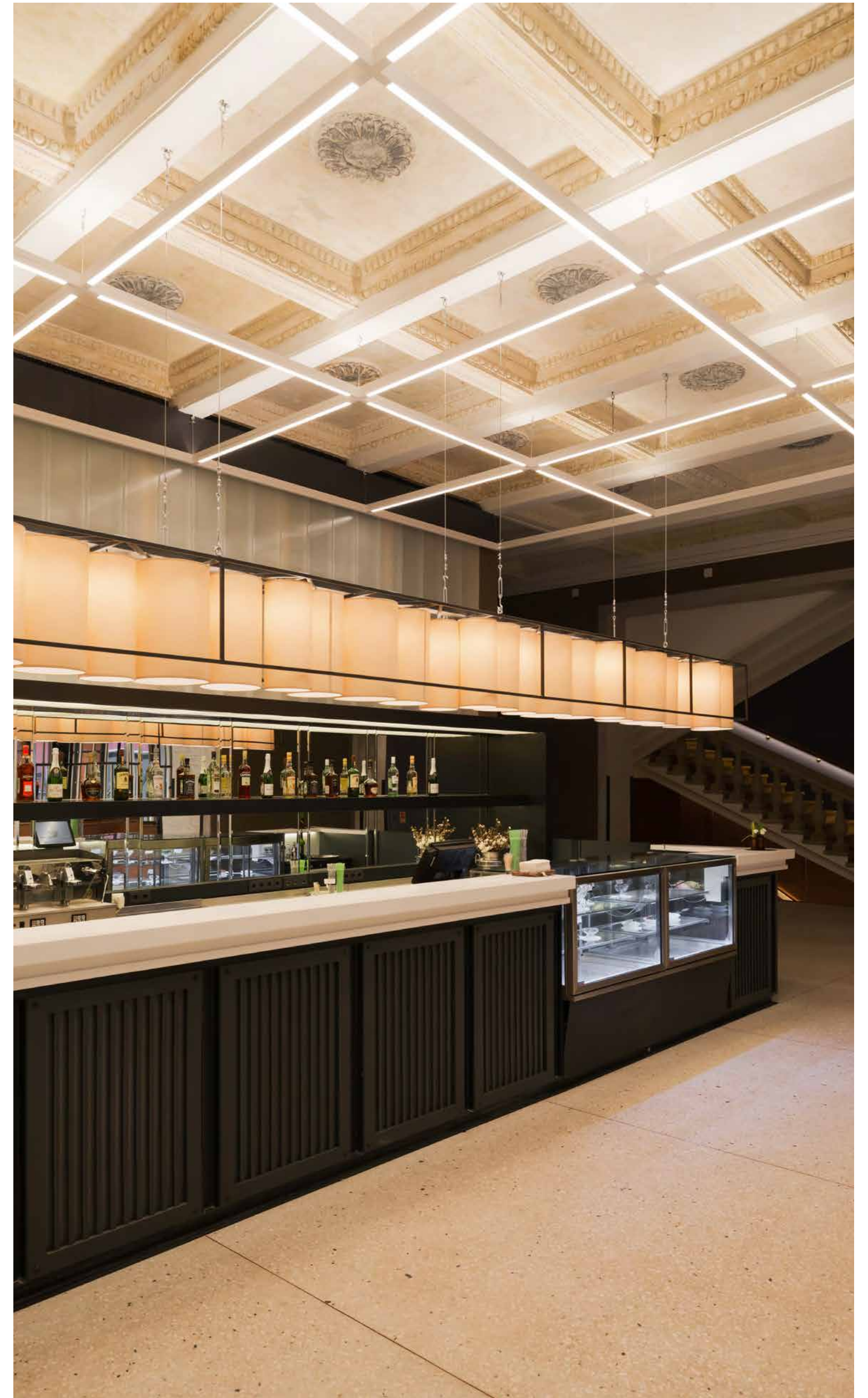
As a result of thought-out reconstruction, the architectural monument was turned into a modern theater venue. Light has become one of the key means of shaping the image of a new space, "revealing" the historical layers of the building and emphasizing the functional versatility of the spaces created inside it.

The expressive structure of the caissons on the ceiling of the main foyer is duplicated by the minimalistic grid of profiles with LED luminaries.

Due to the system of tracks located along the walls and under the ceiling in the main hall, maximum variability of light scenarios is provided.

Spot lighting in the foyer blurs the border between the stage and the audience area, creating a special "pre-theatrical" feeling.





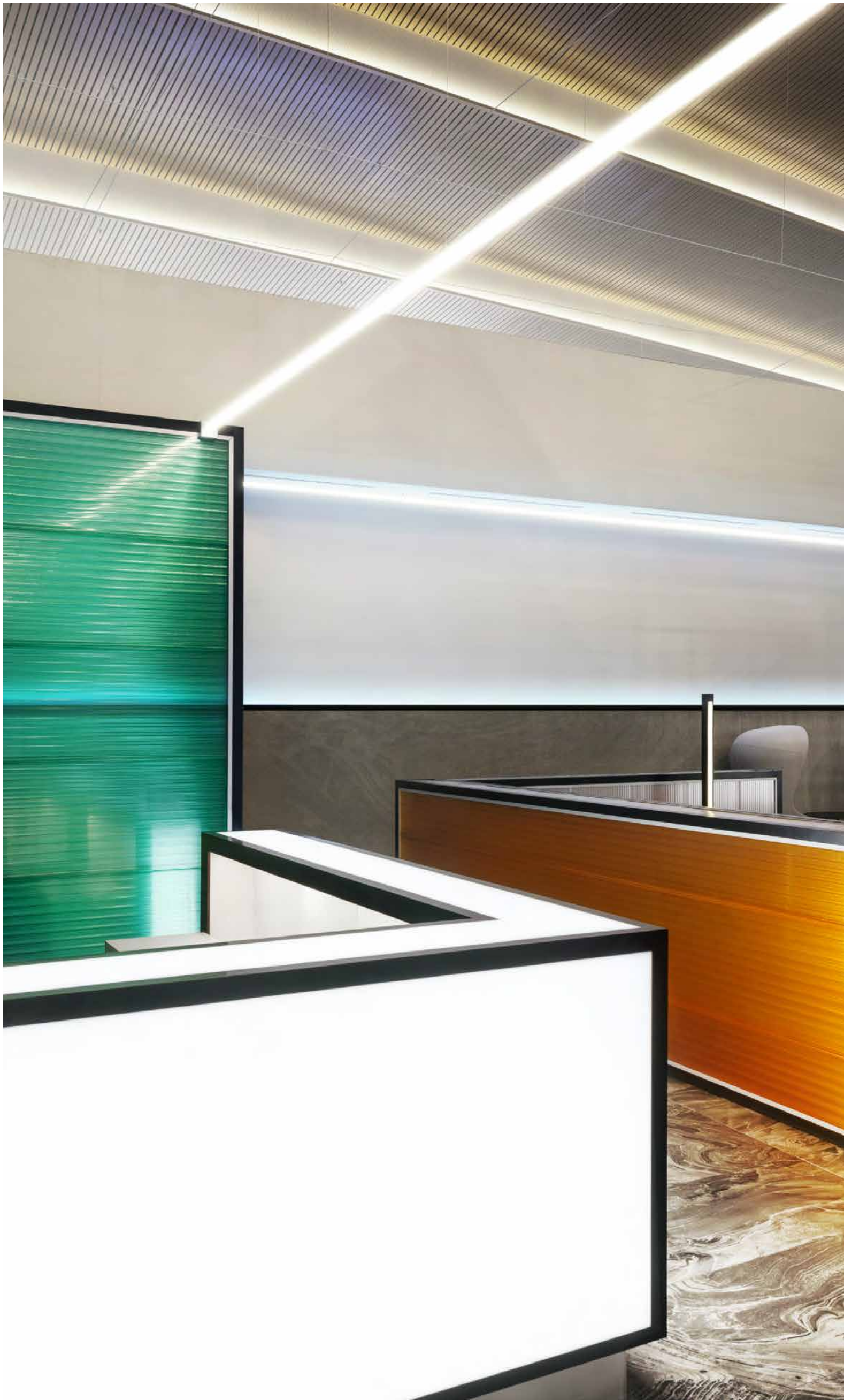
BUSINESS LOUNGE OF PLATOV AIRPORT “THE HORIZON” ROSTOV-ON-DON, 2018

The interior of the airport is emphatically rational and at the same time filled with cozy details designed to make the stay of passengers in there as comfortable as possible.

Functional lighting emphasizes the idea of a graphic interior that was originally laid down in the project. Linear luminaries used in the project create a feeling of lightness and weightlessness.

Diffuse light distribution in the business lounge enhances the foggy dawn effect that characterise Don-river and the prairie stretching around him.





MEDIA CENTER IN “ZARYADYE” PARK MOSCOW, 2017

The main image of the interior of the «Media Center» is special because of unusual ceiling made of many thin threads of different lengths made of polycarbonate tubes. The effect of «streaming light», obtained with the help of specially chosen optics of the luminaries and their wave arrangement, helped to create it. The installation «Northern Lights» required lighting that could highlight the beauty of a natural phenomenon.

A complex scenario of color change from greenish-turquoise to blue and pink-violet with the required speed and frequency of transitions was achieved by testing technical solutions on fragments of the installation.



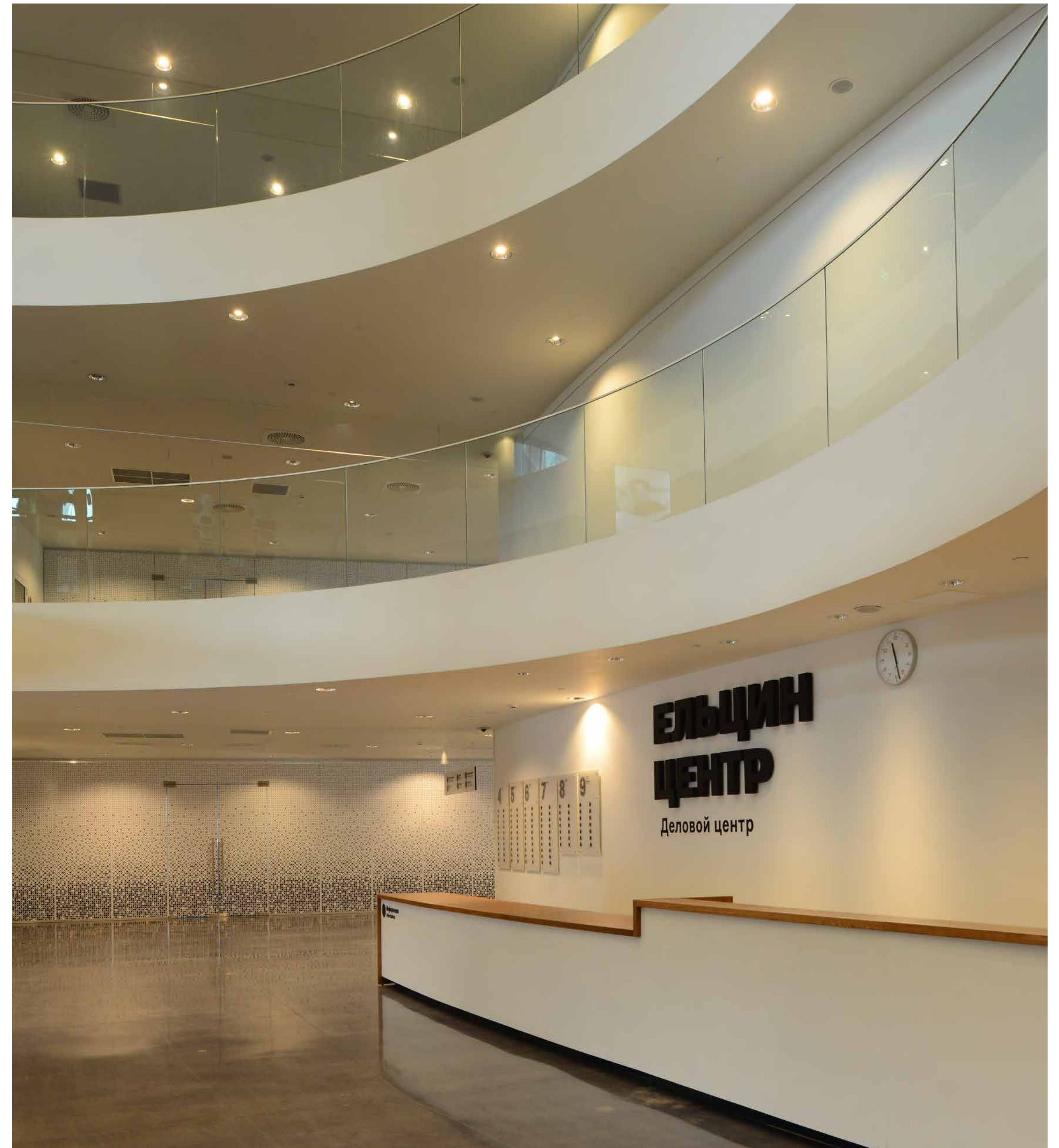


ELTSIN CENTER EKATERINBURG, 2015

Multifunctional space of hybrid type, combining public and commercial functions. For each of the zones, lighting has been developed that ideally meets their purpose and considering the initial data as much as possible (the existence of multimedia exhibits, translucent enclosing structures, etc.).

Uniform horizontal illumination and vertical illumination by lighting equipment with wide light distribution maintains a feeling of lightness of space and fullness of daylight. Lighting scenarios allow to shift the focus depending on the task.





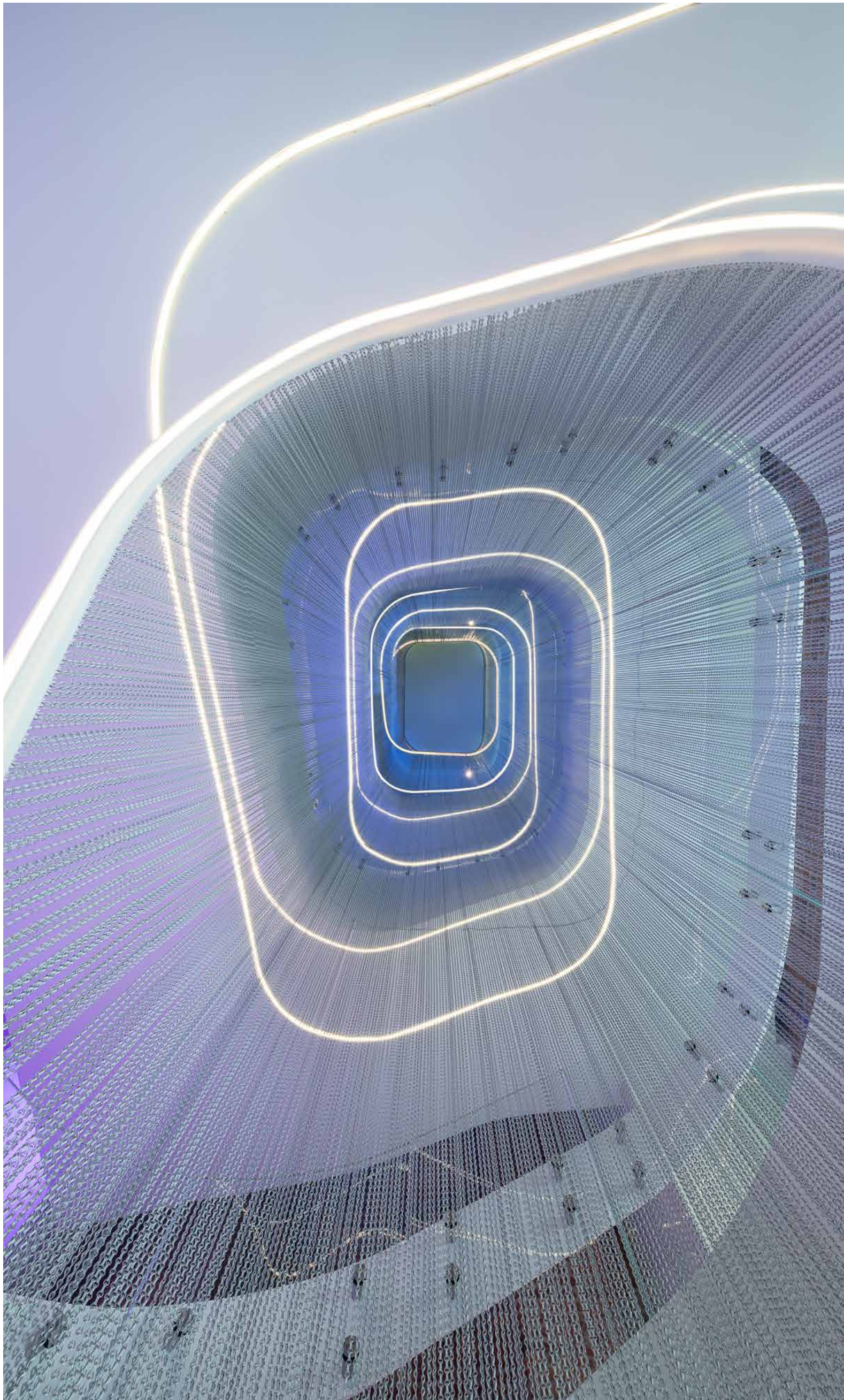
ZIFERGAUZ – DIGITAL TRANSFORMATION CENTRE ST. PETERSBURG, 2021

The main task in the development of the lighting design solution was the creation of a unified, productive and comfortable lighting environment for a multifunctional space, which houses rooms that perform different tasks.

It was possible to solve the problem of the lack of sunlight and ensure a comfortable work of employees with the help of dynamic lighting and Tunable White technology. An intelligent artificial lighting system that takes into account human bio-rhythms helps to activate human resources, setting up for productive work during the day, and in the evening helps to relax and tune in to rest. A new comfortable working environment is also shaped by the balance of horizontal and vertical illumination.

A special decorative effect is created by the multimedia system, which also absorbs noise. Media panels can be easily integrated into the interior and allow you to broadcast dynamic media content that can be controlled using an application from a smartphone.





PRIVATE INTERIORS

NDA



NDA



NDA



NDA



NDA



NDA



APARTMENTS IN DROVYANOV LANE MOSCOW, 2020

The design solution is supported by linear lighting systems that outline the plane of the ceiling, as well as simple rectangular and cylindrical shapes of ceiling and wall luminaries.

In the laconic interior of the apartments were set accents, rhythm with the help of lighting and were created a cozy home atmosphere. A special lightness and airiness are given by the cove lighting, which visually expands the space.

Dimmers help to adjust the light intensity and create the desired light conditions. There is the flexibility of solutions is provided by rotating track projectors in the living room area (winter garden). They also help to zone the space.

During darkness the beauty of the materials used in the interior and the purity of color solutions are emphasized with the help of high-quality artificial lighting.





RECONSTRUCTION OF COUNTRY HOUSE MOSCOW REGION, 2022

The lighting solution for the interior was designed considering the functional and aesthetic tasks. Built-in profile systems in black color during the day continue the theme of the geometry of straight architectural lines and color contrasts. Since the lighting sources are "recessed" in the profile, they are almost invisible during the day, and at night they perform their functional task. The straight lines of the built-in profile complement the recessed luminaires capable for rotation, maintaining the theme of minimalism and geometry.

There is a variability of lighting scenarios was organized thanks to the rotatable spotlights, table, and floor lamps in the project. Soft and dimmed local lighting in the interior creates an atmosphere of calmness, focusing attention on different areas of space. This lighting solutions makes the space multifaceted, and helps to avoid monotony and visual fatigue. At night, artificial lighting becomes a kind of intangible decoration of a minimalist interior.





FLAT ON PLYUSHCHIKHA MOSCOW, 2021

The laconic interior design is complemented by modern decorative luminaries with minimalistic shapes. Functional lighting in each zone of the apartment is realized with the help of technical lighting fixtures, which are almost invisible on the ceiling surface. They provide the required level of illumination in the room.

All technical light in the apartment, from spotlights to LED strips, is controlled by the DALI system. Lighting control is realized with the help of button dimmers, which also can control lighting equipment with tunable white technology. Decorative luminaries can be dimmed too. Some have a sensor dimming function. There is a functionality of creating different light scenarios in the interior, which can be changed depending on the lighting conditions, tasks, and situations.





COUNTRY RESIDENCE GORKI-1, 2016

Linear graphics emphasize the horizontal bar. The rotary devices of the system allow to exhibit art objects on the walls. In the directed rays of the fixtures, the whole interior looks like an exhibit, and its details - jewelry from the casket.

The game of glare of crystal chandeliers continues with a lamp in the opening, which frames with light lace the entrance to the interiors of the 2nd floor.

The rotary devices also allow to achieve optimal values of illumination in two-light spaces and areas under the roof arches. High color rendering and warm color temperature are favorably emphasized finishing materials in which prevails a noble tree.





COUNTRY HOUSE IN NOVYE VESHKI MOSCOW REGION, 2020

The interior is dominated by simple, laconic forms that reflect the concept of minimalism. Functional lighting is provided by almost invisible, minimalist luminaires. With their help, it was possible to achieve the required level of illumination and uniformity of general light. Decorative lamps made in a simple geometric form complement the design solution, placing light accents in the right areas, creating a cozy atmosphere.

The home theater area is a place with combination of technology and comfort. Profile systems on the ceiling create a feeling of lightness and "air". They are complemented by minimalistic profiles at the bottom of the walls, which provide the effect of floating in space. Track system with compact spot-lights helps to place accents in the bar area.





QPRO. CREATIVE ENGINEERING

MOSCOW,
NIZHNYAYA SYROMYATNICHESKAYA, 10/2
+7 495 120 6708
ask@qpro.info

